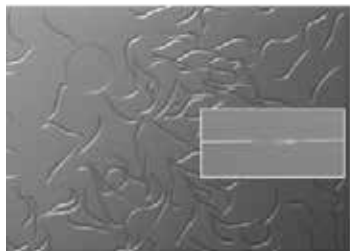




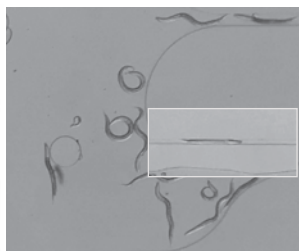
NemaMetric



Larval Stage 1
250 - 350 μ m



- conspicuous pharynx extends almost half body



Larval Stage 2
360 - 380 μ m



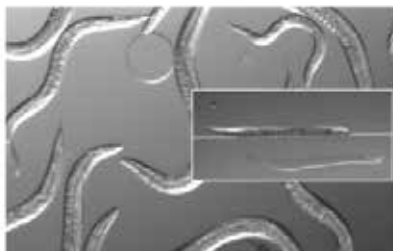
- gonad is appearing at the posterior half body



Larval Stage 3/4
500 - 900 μ m



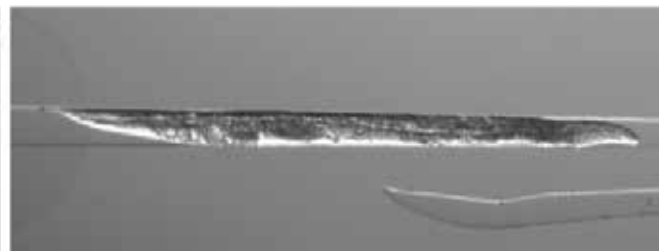
- bean shaped vulva



Adult Day 1
1.0 mm



- embryos and eggs present



Adult Day 6
1.7 mm



- few embryos or eggs present
- dark body color

ScreenChip size

SC10

(no food exposure, L1 arrest)

SC20

(Time post food exposure)

SC30

SC40

(days after first eggs formed in the gonade)

SC60

Room temperature

18°C

12 hr

26 hr

48 - 50 hr

0 - 5 days

8+ days

20°C

12 hr

24 hr

46 - 48 hr

0 - 4.5 days

8+ days

22°C

12 hr

22 hr

44 - 46 hr

0 - 4 days

7+ days